



MEMO

Date: March 21, 2017
To: Transportation Advisory Board
From: Al Zubi, Supervising Engineer
Re: State Route 24 Update

In December 2016, Parsons on behalf of the Arizona Department of Transportation completed a Design Concept Report (DCR) regarding State Route 24 (SR24). The following is a briefing of the DCR presented to the City of Mesa Transportation Advisory Board.

300 East Sixth Street
P.O. Box 1466
Mesa Arizona 85211-1466
480.644.2160Tel
www.mesaaz.gov

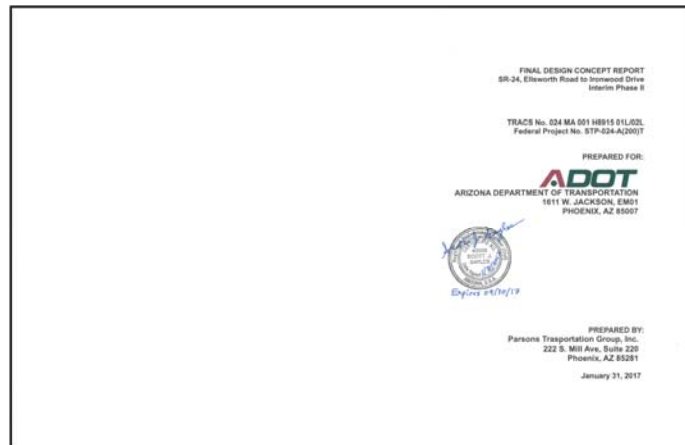
State Route 24 Update

City of Mesa Transportation
Advisory Board Meeting

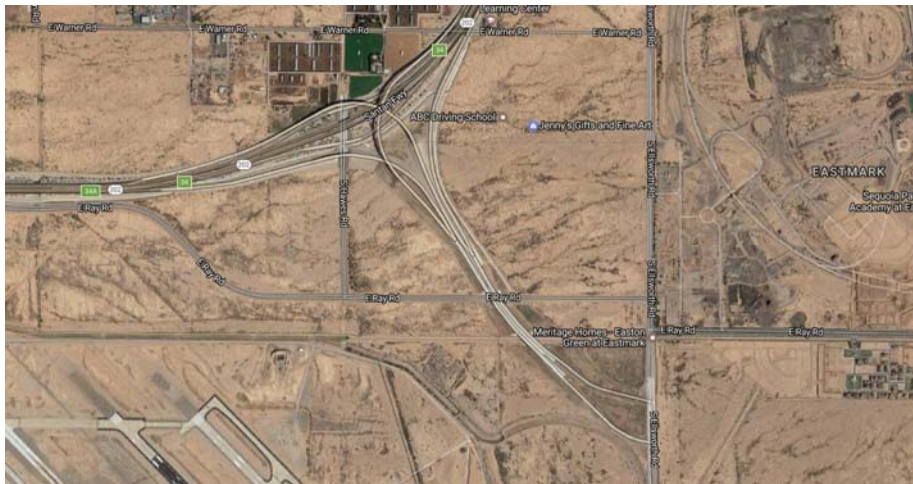
March 21, 2017



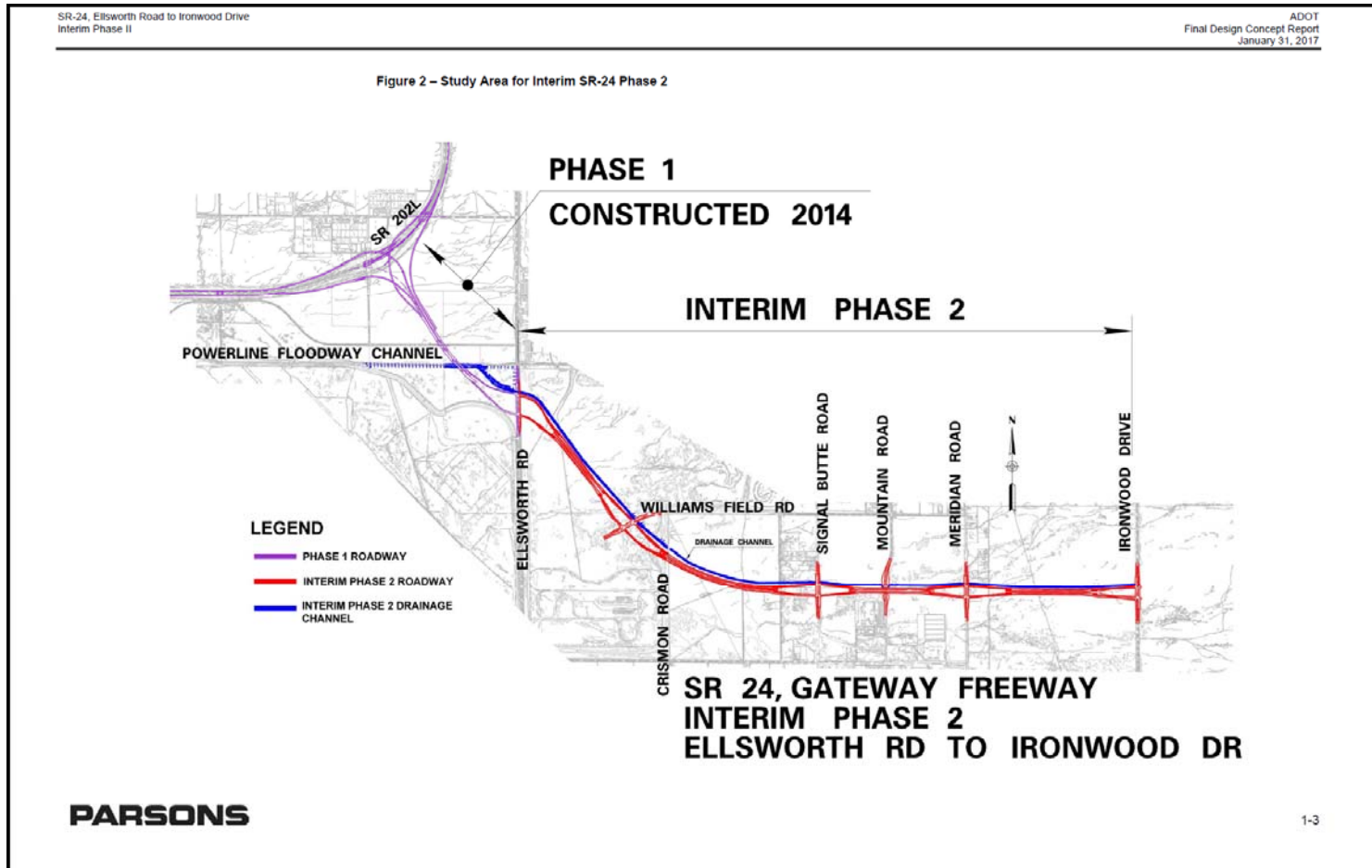
Parsons Transportation Group completed Design Concept Report (DCR) on behalf of ADOT



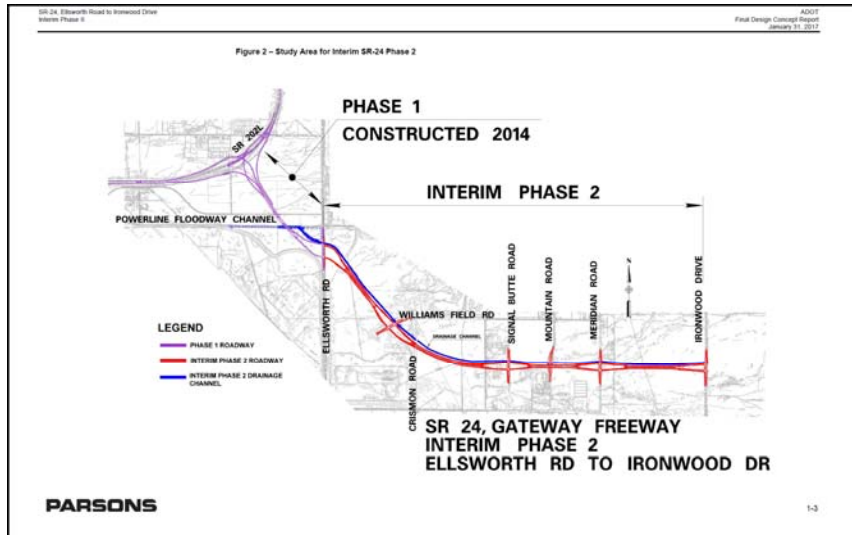
- In 2014 the first segment of State Route 24 (SR24) was constructed from the 202L to Ellsworth Road
- The project cost \$81 Million for design and construction and \$36 million in right of way



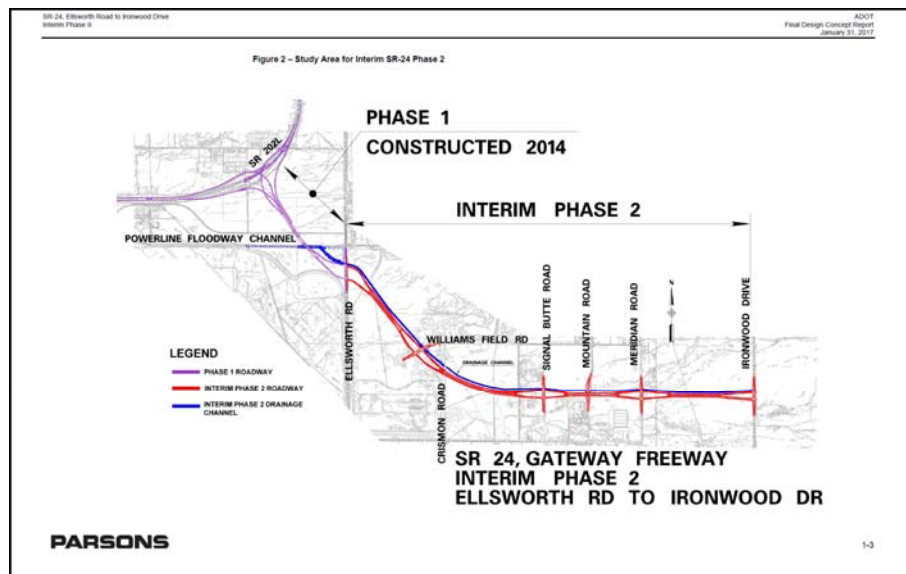
- The freeway alignment would turn from Ellsworth Road and follow Frye Road to the east



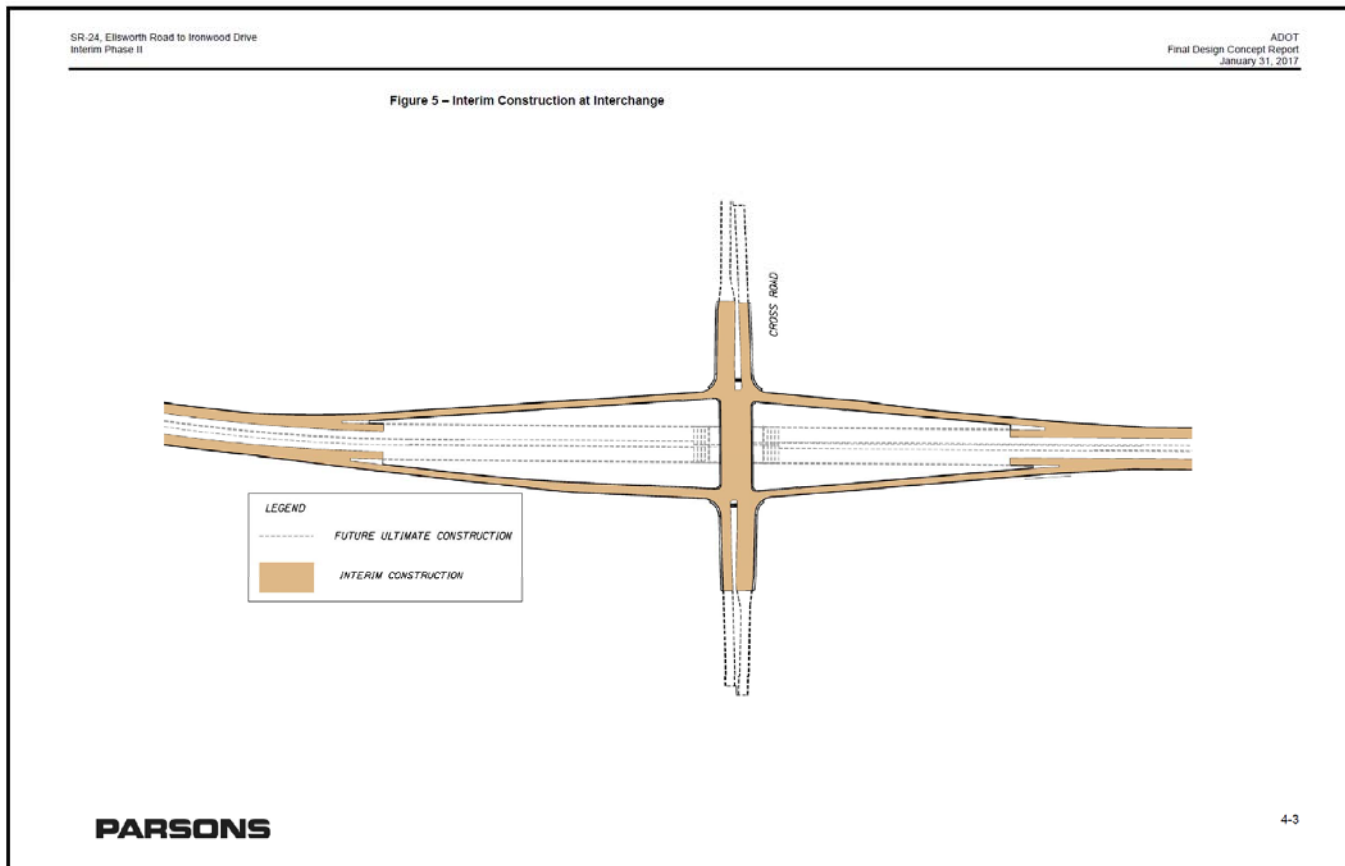
- The DCR proposes an interim condition to follow the final alignment of the freeway
- The interim highway would have at grade intersections all locations of future freeway intersections



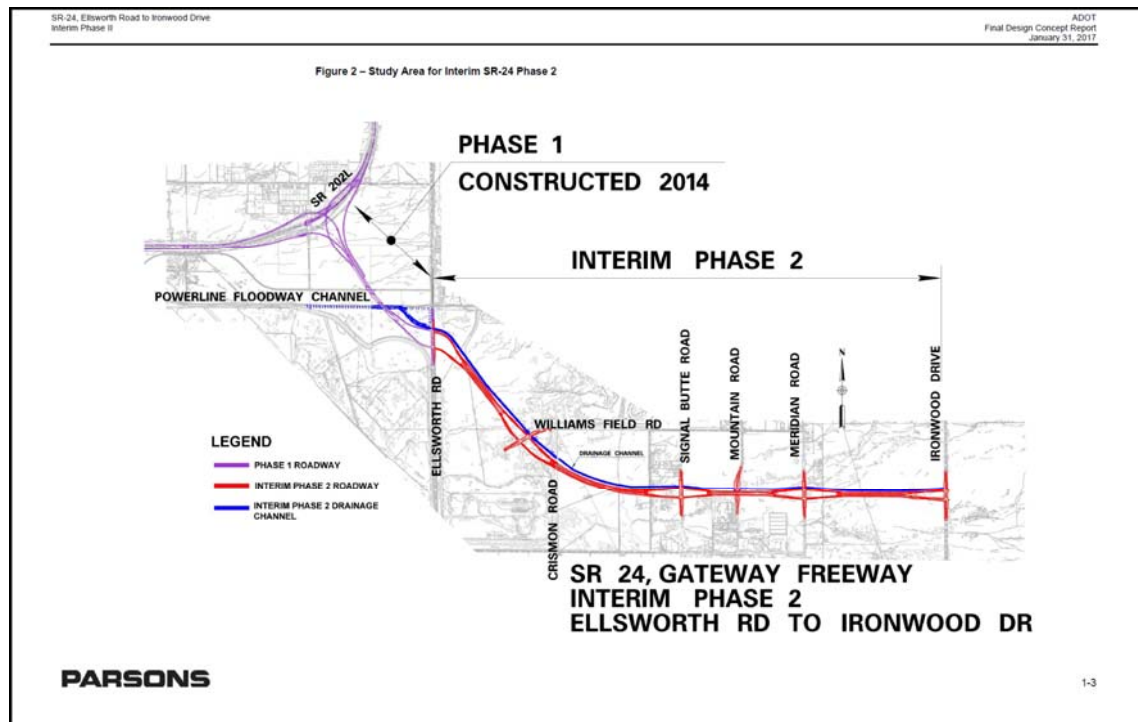
- The locations are Williams Field Road, Signal Butte Road, and Meridian Road
- Mountain Road will continue to be a through street
- The freeway would extend to Ironwood Drive



- Consideration was taken to minimize construction cost for the interim condition



- Estimated project cost \$136.5 million, including right of way, design and construction



Questions?

